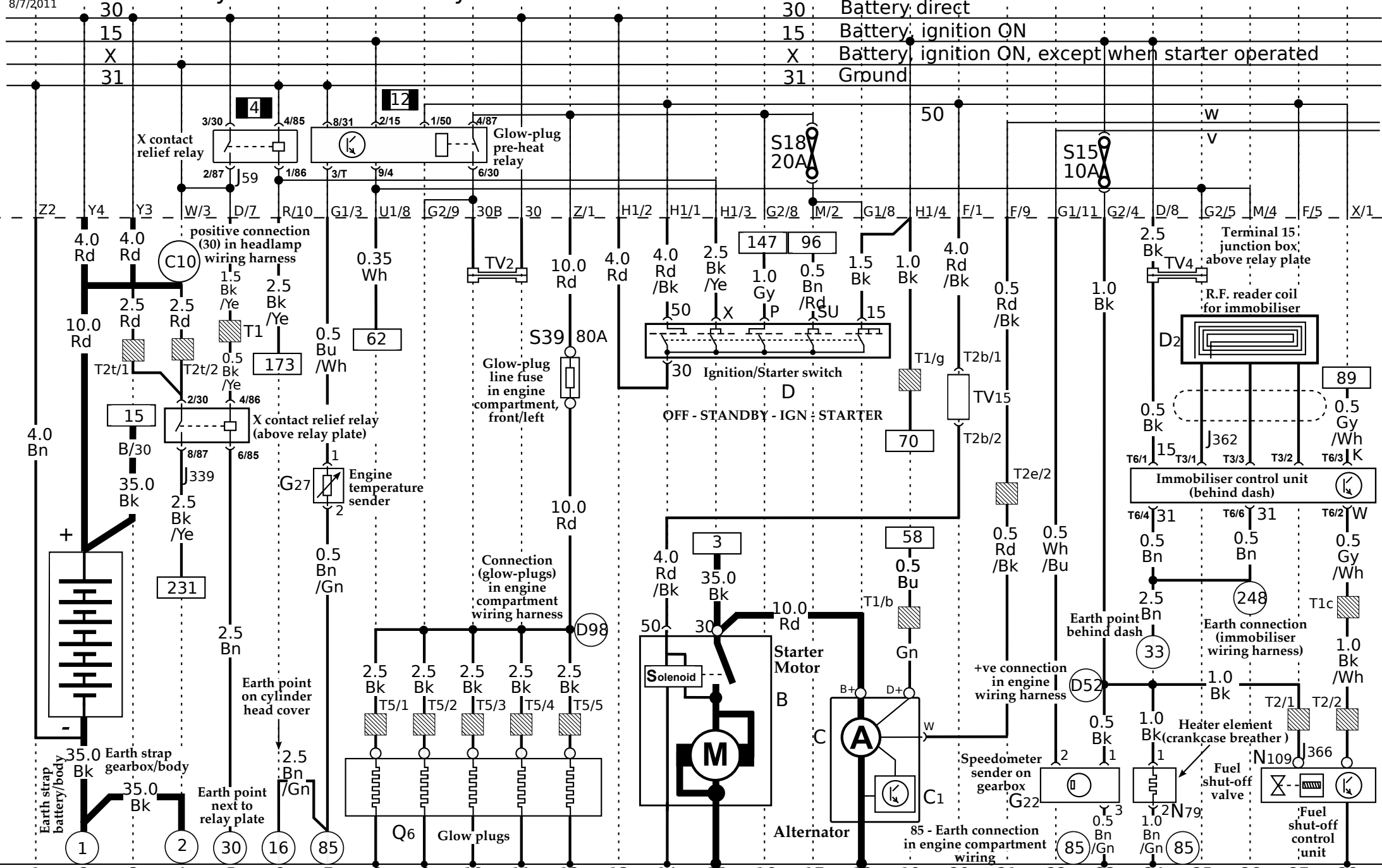


Battery

Relief relays

Ignition switch

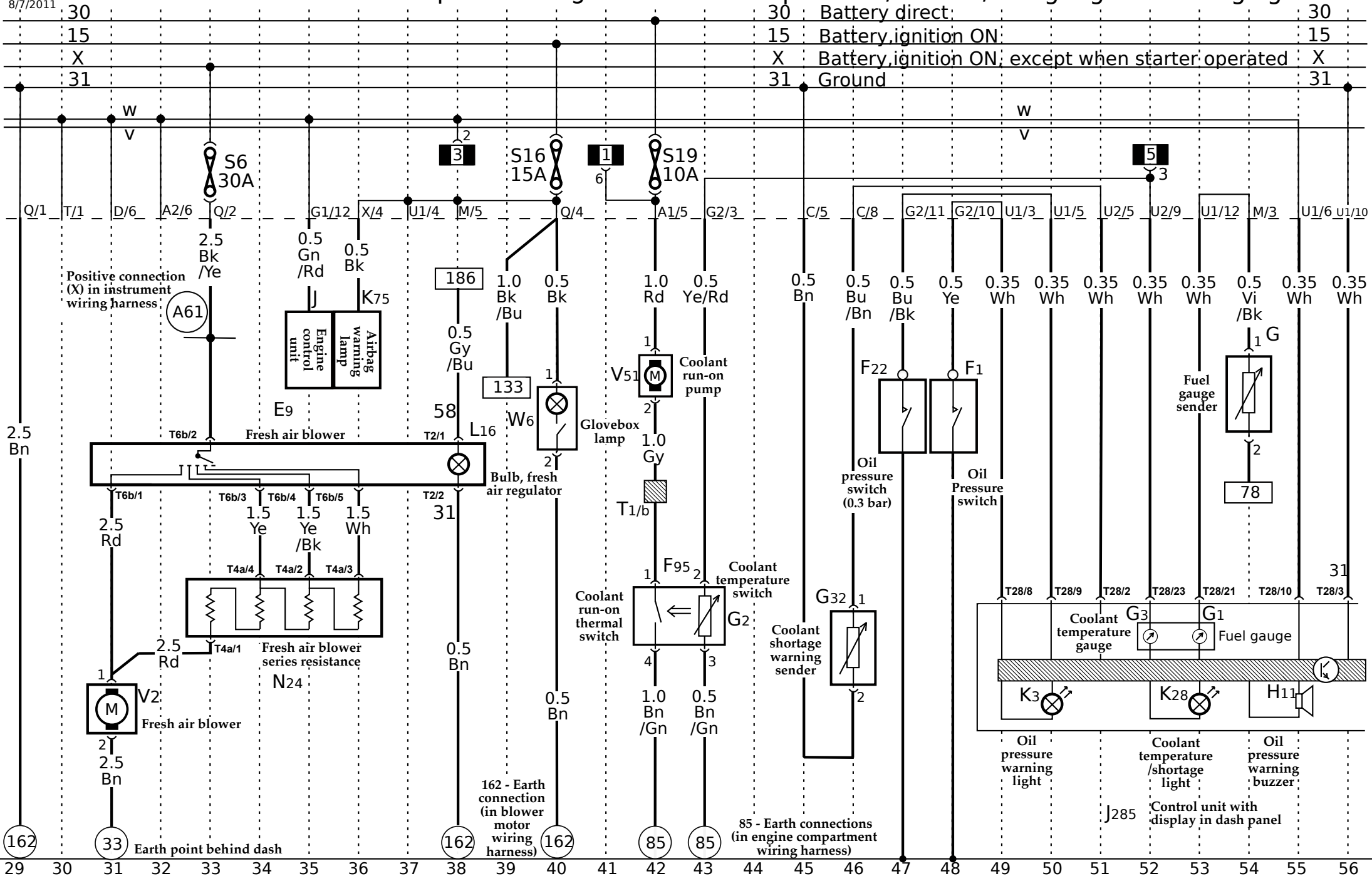
Immobiliser



T1 and T1g - Single connector behind relay plate
 T2t - 2-pin connector behind relay plate
 T2b - 2-pin connector behind relay plate
 T1c - Single connector on immobiliser unit
 T1/b - single connector near starter motor
 T3 - 3-pin connector on immobiliser
 T6 - 6-pin connector on immobiliser

Fresh air blower - Glove compartment light

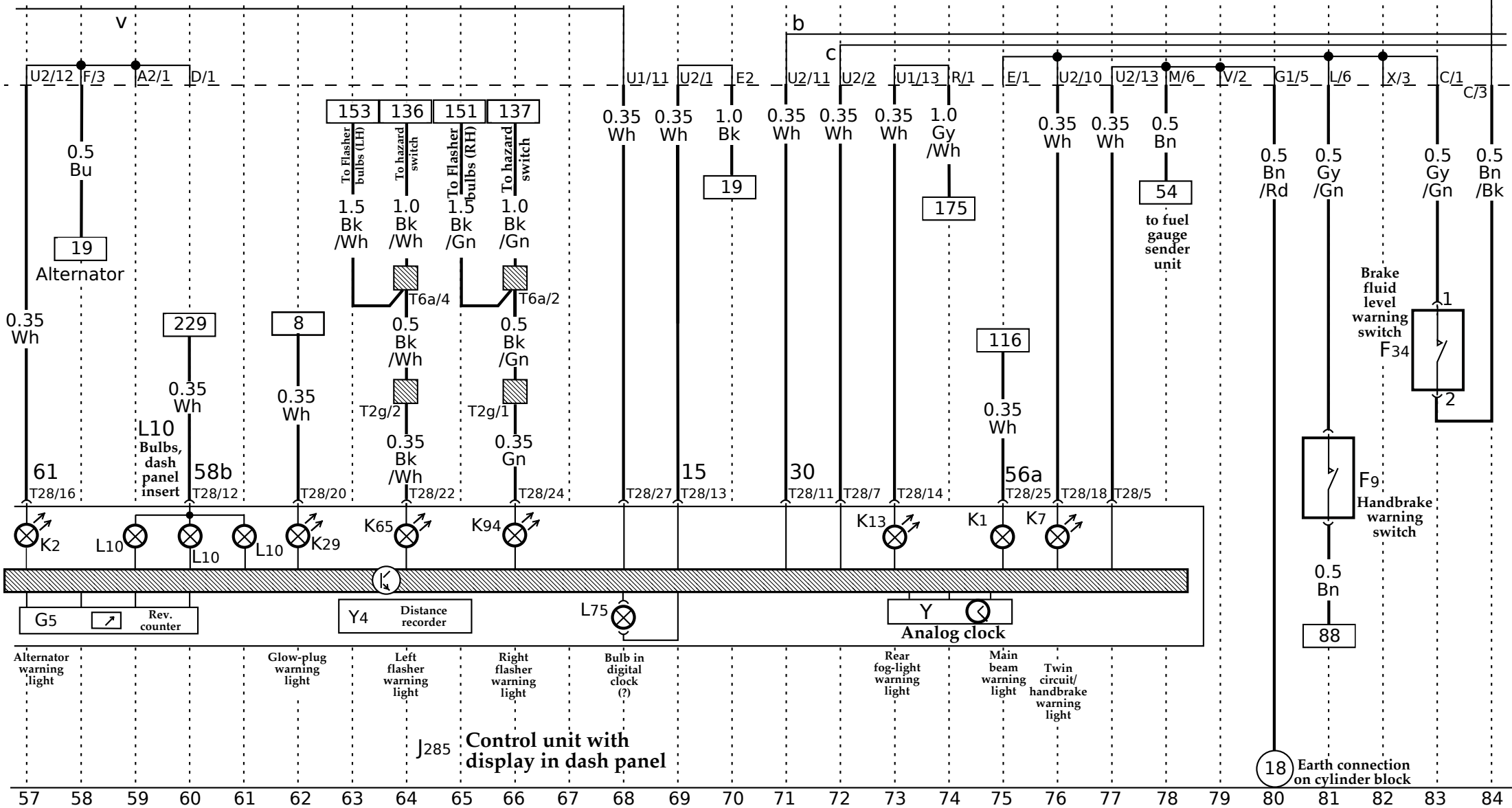
Dash - oil pressure/coolant/fuel gauges. Warning lights



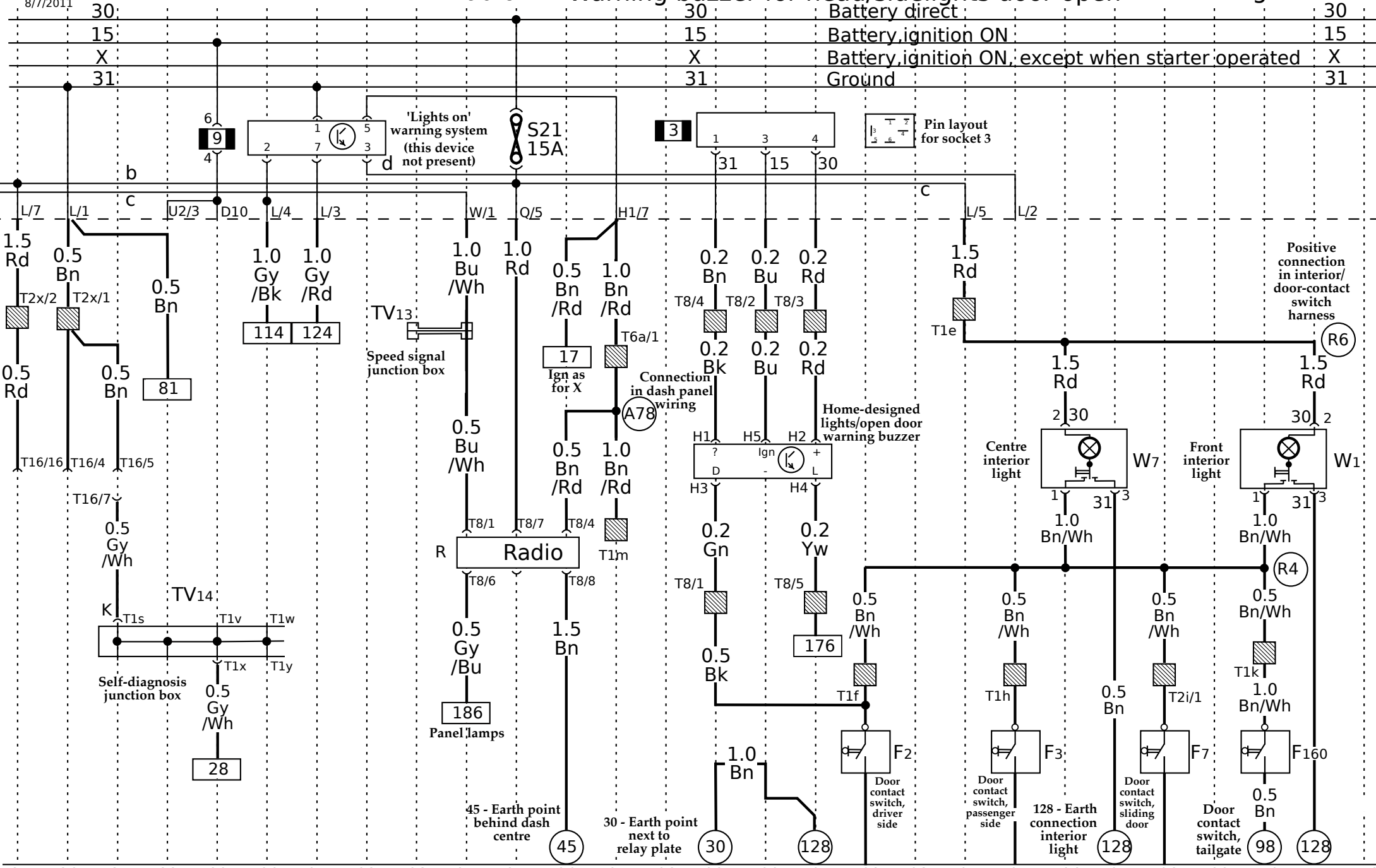
Dash - oil pressure/coolant/fuel gauges & warning lights

Handbrake & brake-fluid warning switches

30	Battery direct:	30
15	Battery, ignition ON:	15
X	Battery, ignition ON, except when starter operated:	X
31	Ground	31



Radio Warning buzzer for head/sidelights door open Interior lights



T1<letter> - all single connectors
T2x - 2-pin connector behind relay plate
T6a - 6-pin connector behind relay plate
T8 - 8-pin connector on radio
T16 - 16-pin connector, dash panel
T2i - 2-pin connector nr. centre interior light contact switch wiring harness

Lighting switch

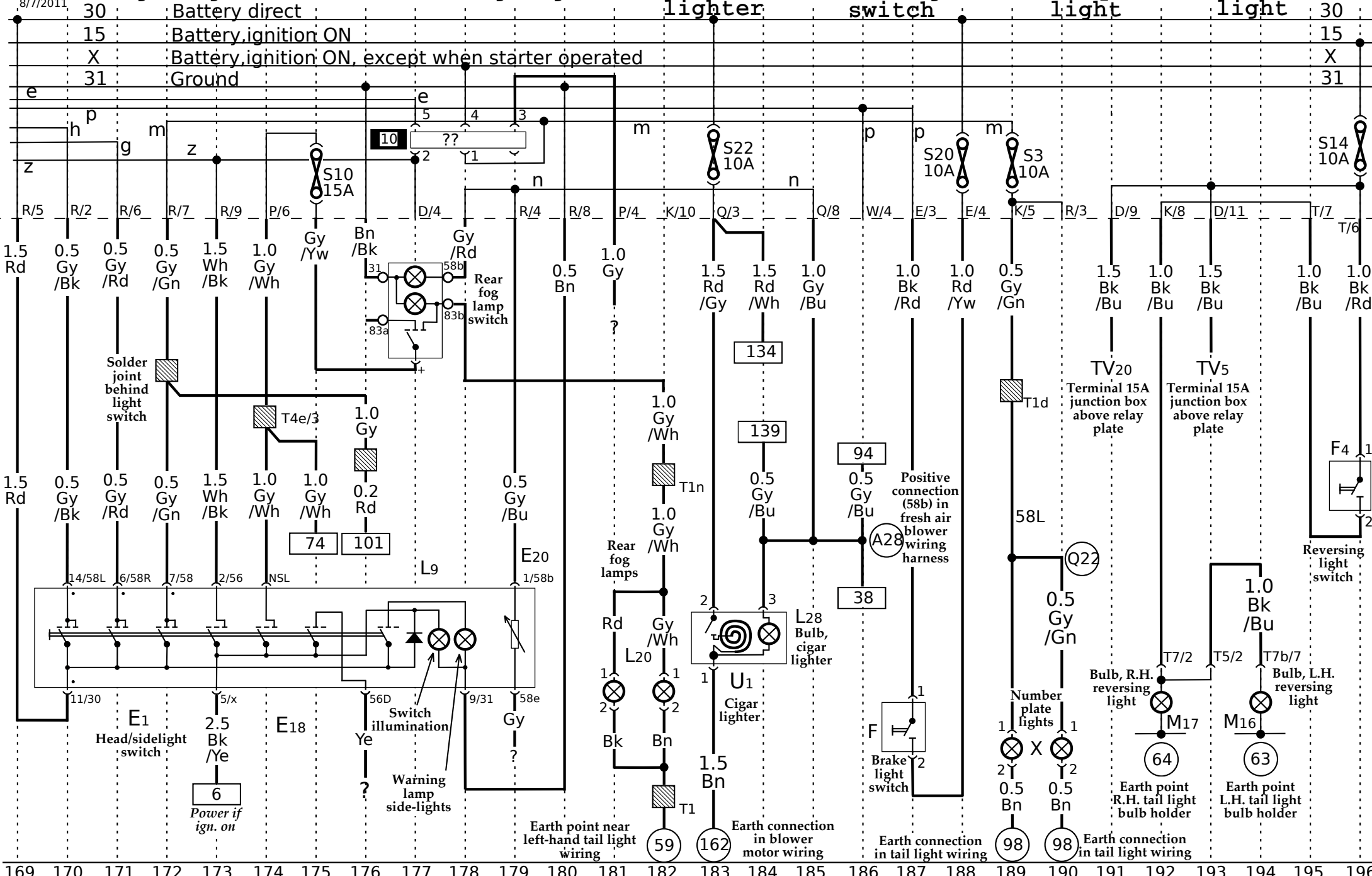
Rear fog light

Cigar lighter

Brake light switch

Number plate light

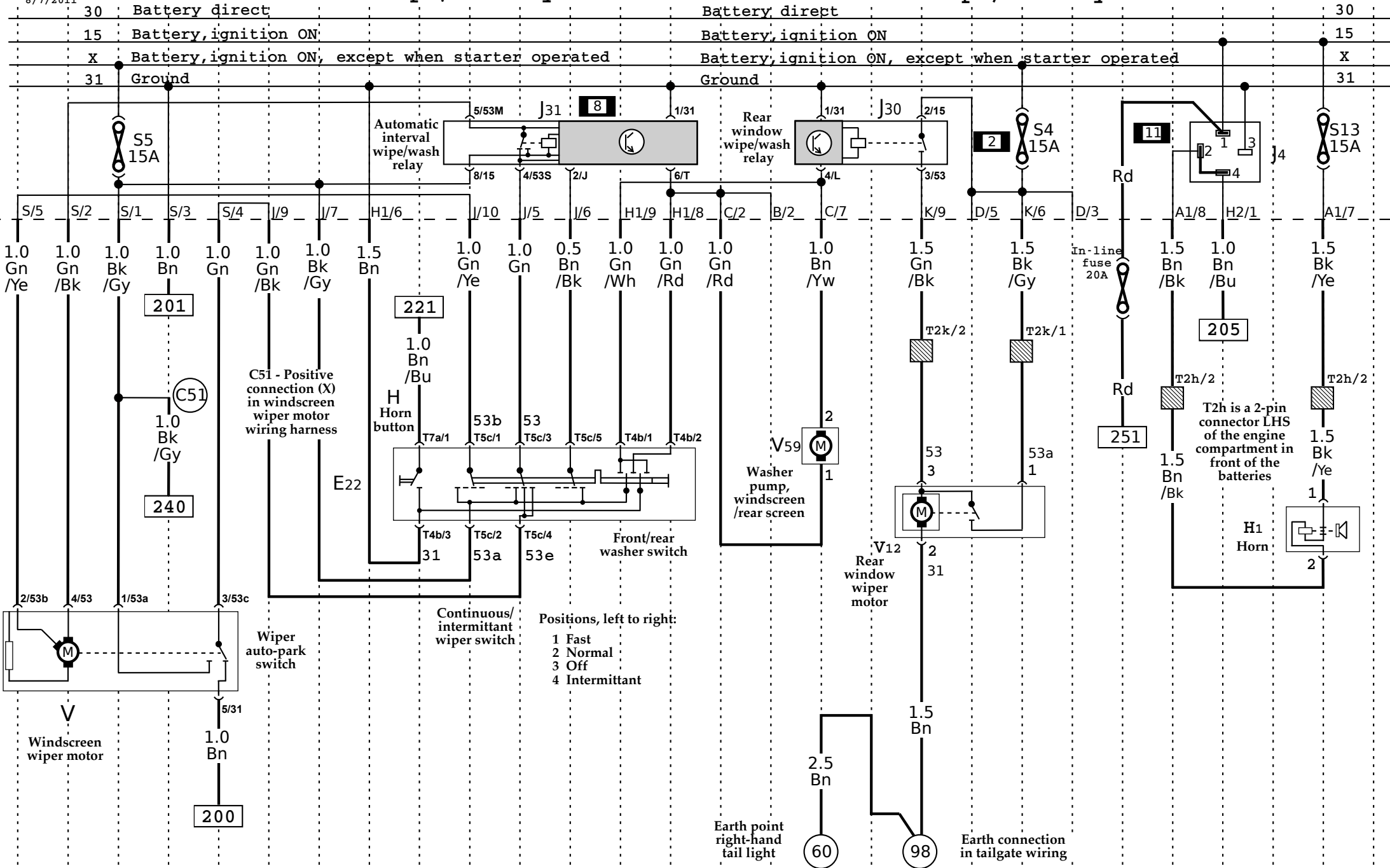
Reversing light



Windscreen wipe/wash system

Rear window wipe/wash system

Horn

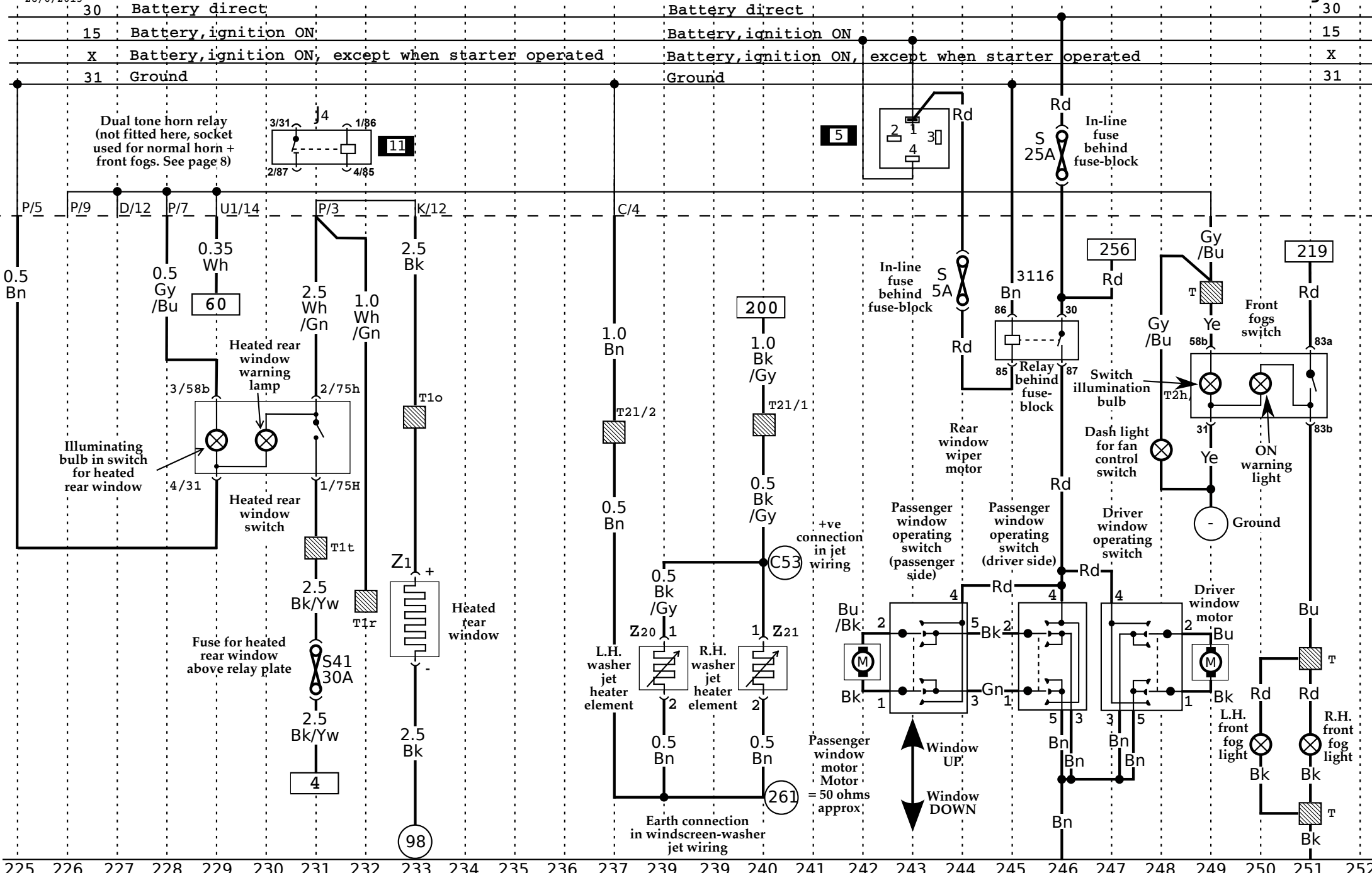


T2h - 2-pin connector in engine compartment, front right
 T4b - 4-pin connector behind steering column switch trim
 T2k - 2-pin connector, near right-hand tail light
 T5c - 5-pin connector behind steering column switch trim
 T7a - 7-pin connector behind steering column switch trim

Heated rear window

Electric windows

Front fogs



T1<letter> - single connectors behind relay plate

T21 - 2-pin connector, on bulkhead, right

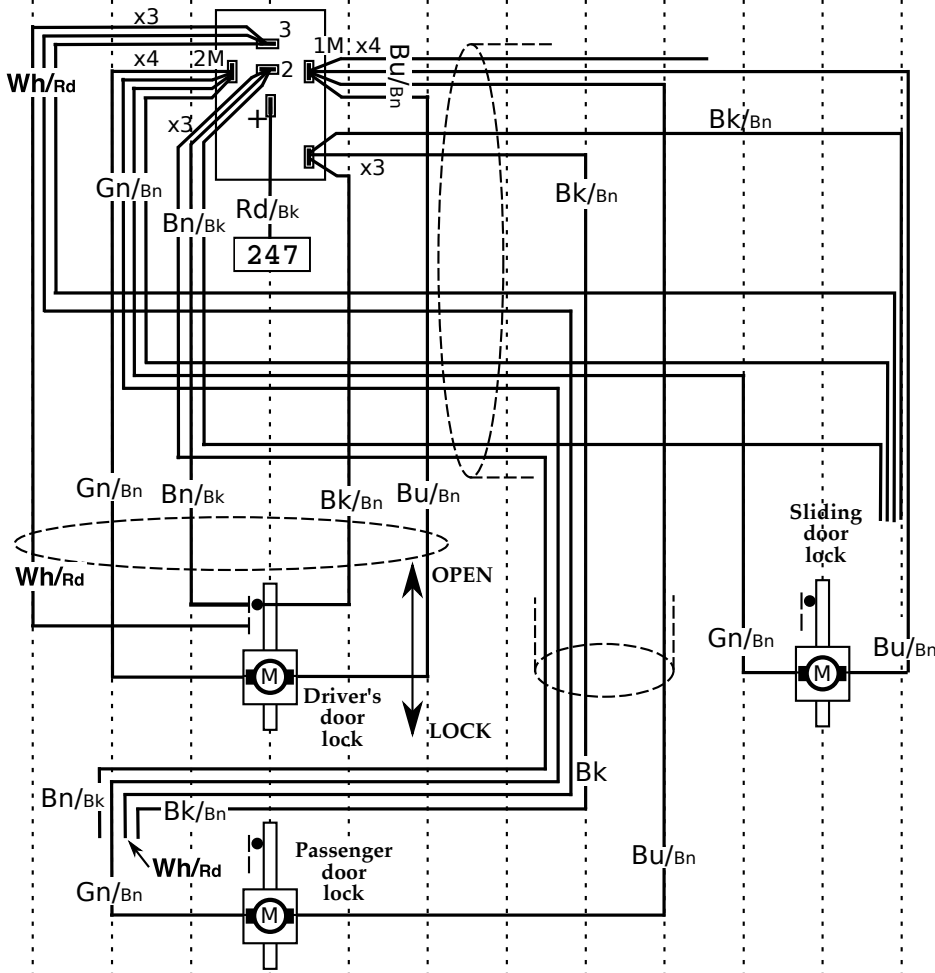
Central door locking

Immobiliser unit

30	Battery direct
15	Battery, ignition ON
X	Battery, ignition ON, except when starter operated
31	Ground

GEMTEC
GDM1
Control
module

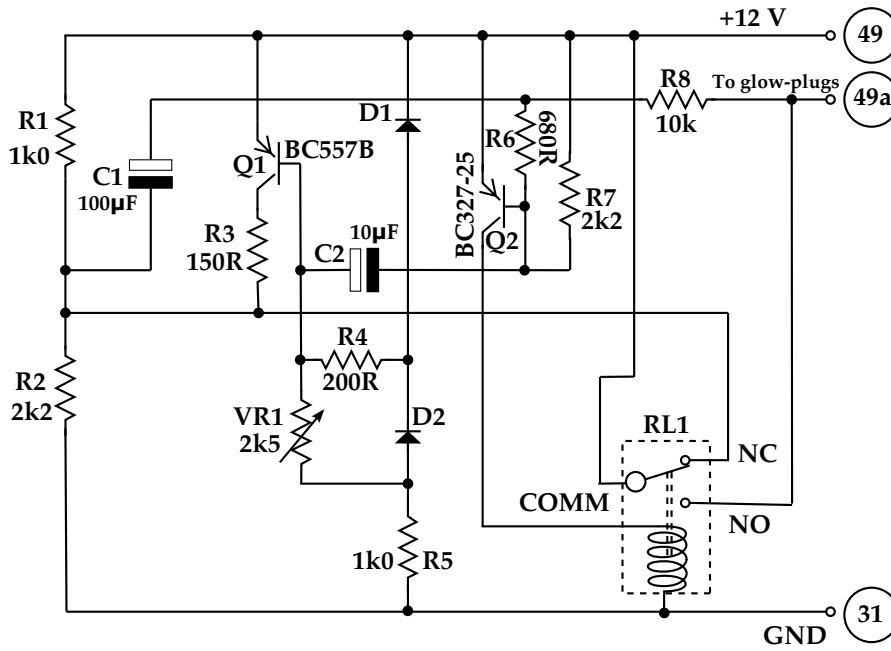
Where there are two colours, the second appears as small, rectangular patches on the main background



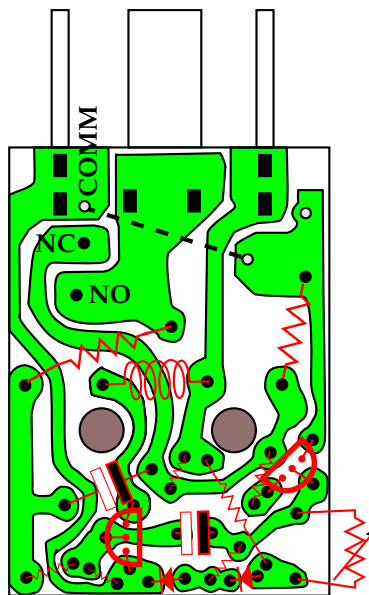
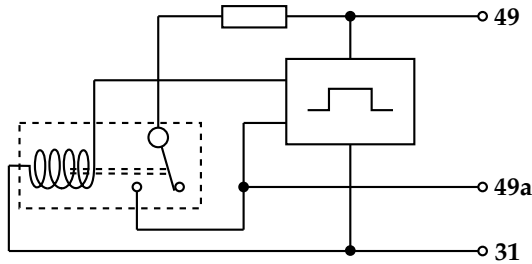
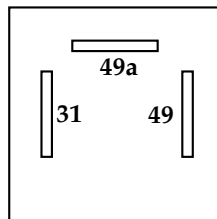
Ye	Vi	Gy/Gn	Gy/Rd	Gy/Vi	Gn	Wh	Bn/Wh	Ye
CLIFFORD ARROW II								
ERC 1345G6AA					54-700			
Bk	Bk	Bn	Rd/Wh	Rd	Rd	Or	Gy	Wh/Bn

253 254 255 256 257 258 259 260 261 262 263 264 265 266 267 268 269 270 271 272 273 274 275 276 277 278 279 280

Glowplug delay unit



Bottom view



PC board layout

Central locking control unit circuit

